

Overview of Regulatory system - Germany

BfR

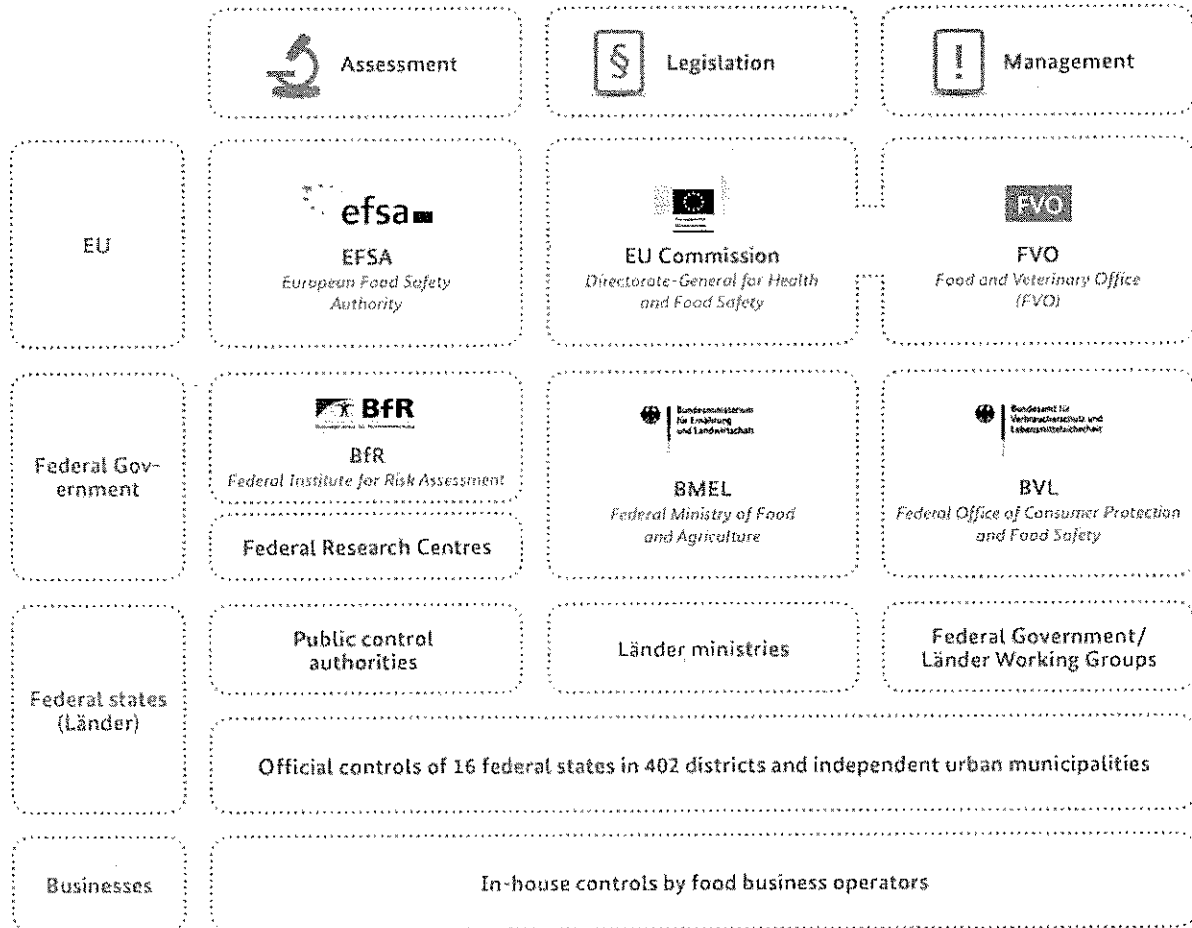
- The Federal Institute for Risk Assessment abbreviated BfR, is a body under public law of the German federal government with full legal capacity.
- The institute comes under the portfolio of the Federal Ministry of Food and Agriculture and has the task of providing scientific advice to the federal government on issues relating to food safety, product safety, chemical safety, contaminants in the food chain, animal protection and consumer health protection.

BVL

- The Federal Office of Consumer Protection and Food Safety (BVL) is an agency of the German government that comes under Federal Ministry of Food and Agriculture (BMEL).
- It contributes towards food safety and grants authorization. It jointly coordinates monitoring programs with federal states.
- Within the framework of the European rapid alert system, the BVL secures the flow of information between the EU and the Federal States.
- It is also the German contact point for the inspections of the Food and Veterinary Office of the European Commission. Apart from that, the BVL supports the Federal Ministry of Food and Agriculture in crisis management.
- It is also the German contact point for the inspections of the Food and Veterinary Office of the European Commission.

Annexure 1

Structure of Food Safety Network in European Union and Germany



Annexure 2

Health-related Consumer Protection (National Level)

Federal Ministry of Food and Agriculture (BMEL)

- German Authority for food safety and agriculture
- Cooperation with the European Commission
- Risk communication

Scientific
advisory
service



Federal Institute for Risk Assessment (BfR)

- Risk assessment
- Risk communication

Scientific
advisory
service



Data

Cooperation



Data

Federal Office of consumer Protection and Food safety (BVL)

- Risk management
- Communication
- Coordination of federal, national and EU activities

Basic principles of food safety in Germany

